



St Mark's

Programme of Inquiry 2023



Preschool

How we express ourselves

An inquiry into the ways in which we discover and express ideas, feelings, nature, culture, beliefs and values; the ways in which we reflect on, extend and enjoy our creativity; our appreciation of the aesthetic.

Central idea

Creativity can be expressed in different ways.

Key Concepts

Form, Perspective, Change

Related Concepts

Creativity, imagination, self-expression, movement, culture

Lines of inquiry

- Various materials to express creativity
- Expression through drama and role play
- Exploring and creating cultural performances as a form of expression

Learner Profiles

Communication, Risk-Taker, Open-Minded

Approaches to learning

Social, Communication

Te Whariki Strand:

Communication

How we organise ourselves

An inquiry into the interconnectedness of human-made systems and communities; the structure and function of organizations; societal decision-making; economic activities and their impact on humankind and the environment.

Central idea

Journeys we take can connect us with our community.

Key Concepts

Connection, Function

Related Concepts

System, pattern, geography

Lines of inquiry

- How we organise the journeys we take
- Connections in our community
- How patterns and maps guide us on our journey

Learner Profiles

Inquirer, Thinker, Risk-Taker

Approaches to learning

Thinking, Research

Sharing the planet

An inquiry into rights and responsibilities in the struggle to share finite resources with other people and with other living things; communities and the relationships within and between them; access to equal opportunities; peace and conflict resolution.

Central idea

Actions impact the environment.



Key Concepts

Causation, Change, Responsibility

Related Concepts

Empathy, consequences, conservation

Lines of inquiry

- Caring for our environment
- Minimising waste
- Adapting habits

Learner Profiles

Principled
Balanced
Caring

Approaches to learning

Thinking, Research, Self-management

Who we are

An inquiry into the nature of the self; beliefs and values; personal, physical, mental, social and spiritual health; human relationships including families, friends, communities and cultures; rights and responsibilities; what it means to be human.

Central idea

We are alike and different in many ways.



Key Concepts

Connection, Form

Related Concepts

Comparison, identity, growth

Lines of inquiry

- Similarities and differences
- Human characteristics
- Connecting with others

Learner Profiles

Learner Profiles in Action

Approaches to learning

Self-management, social

Year 0/1

Who we are
An inquiry into the nature of the self; beliefs and values; personal, physical, mental, social and spiritual health; human relationships including families, friends, communities and cultures; rights and responsibilities; what it means to be human.

Central idea
A person's beliefs about themselves shapes them as a learner.



Key Concepts
Causation, change, perspective

Related Concepts
Cooperation, identification, categorising and evidence, goals

Lines of inquiry

- Factors that influence self-identity
- How a growth mindset develops a learner
- Our responsibility toward others

Learner Profile
Risk-taker, Reflective

Approaches to Learning
Self Management, communication

How we organise ourselves
An inquiry into the interconnectedness of human-made systems and communities; the structure and function of organisations; Societal decision-making; economic activities and their impact on humankind and the environment.

Central idea
Communities function when people work together.

Key Concepts
Connection, responsibility, function

Related Concepts
Cooperation, Communication, Roles

Lines of inquiry

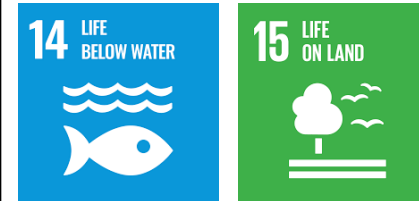
- How communities function
- Community roles
- Characteristics of a community

Learner Profile
Communicators, Inquirers, Reflective

Approaches to Learning
Communication, self-management

Sharing the Planet
An inquiry into rights and responsibilities in the struggle to share finite resources with other people and with other living things; communities and the relationships within and between them; access to equal opportunities; peace and conflict resolution.

Central idea
The survival of living things is connected to our interaction with the environment.



Key Concepts
Change, form, perspective

Related Concepts
Biodiversity, habitats, responsibility

Lines of inquiry

- Biodiversity
- Endangered animals
- Our responsibility in the environment

Learner Profile
Principled, Caring

Approaches to Learning
Research, Thinking

How we express ourselves
An inquiry into the ways in which we discover and express ideas, feelings, nature, culture, beliefs and values; the ways in which we reflect on, extend and enjoy our creativity; our appreciation of the aesthetic.

Central idea
People recognise important events through celebrations and traditions.

Key Concepts
Connection, causation, responsibility

Related Concepts
Belief, culture, value, traditions


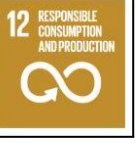
Lines of inquiry

- Cultural celebrations
- The similarities and differences between cultures
- Traditions




Learner Profile
Caring, Open-minded, Balanced

Approaches to Learning
Research, Communication, Thinking


Year 2

<p>Who we are An inquiry into the nature of the self; beliefs and values; personal, physical, mental, social and spiritual health; human relationships including families, friends, communities and cultures; rights and responsibilities; what it means to be human.</p> <p>Central idea Being mindful of ourselves and others helps us develop positive relationships.</p> <p>Key Concepts Responsibility, Form, Connection</p> <p>Related Concepts Relationships, beliefs</p> <p>Lines of inquiry</p> <ul style="list-style-type: none"> Personal skills and values Impact of our actions on others Ways in which we can enhance relationships <p>Learner Profile Reflection, Open-minded</p> <p>Approaches to Learning Self-management, Social</p>	<p>How the world works An inquiry into the natural world and its laws; the interaction between the natural world (physical and biological) and human societies; how humans use their understanding of scientific principles; the impact of scientific and technological advances on society and on the environment.</p> <p>Central idea Machines can make work easier.</p> <p>Key Concepts Function, Causation</p> <p>Related Concepts Machines, energy, movement, balance</p> <p>Lines of inquiry</p> <ul style="list-style-type: none"> Different types of simple machines How simple machines work The place of simple machines in your daily life <p>Learner Profile Knowledgeable, Thinker</p> <p>Approaches to Learning Communication, Research</p>	<p>How we organise ourselves An inquiry into the interconnectedness of human-made systems and communities; the structure and function of organisations; societal decision-making; economic activities and their impact on humankind and the environment.</p> <p>Central idea Transportation systems evolve to meet community needs.</p>  <p>Key Concepts Connection, Form, Change</p> <p>Related Concepts Technology, advocate, systems, communication, efficiency, sustainability</p> <p>Lines of inquiry</p> <ul style="list-style-type: none"> Forms of transportation How transport and transport systems have changed over time Connecting communities <p>Learner Profile Thinker, Communicator, Inquirer</p> <p>Approaches to Learning Research, Communication, Social</p>	<p>How we express ourselves An inquiry into the ways in which we discover and express ideas, feelings, nature, culture, beliefs and values; the ways in which we reflect on, extend and enjoy our creativity; our appreciation of the aesthetic.</p> <p>Central idea There are many ways to tell a story.</p> <p>Key Concepts Perspective, from, change</p> <p>Related Concepts Creativity, experimenting, choices, materials, culture</p> <p>Lines of inquiry</p> <ul style="list-style-type: none"> Favourite stories Elements of a story Various ways of telling a story <p>Learner Profile Reflective, Risk taker, Communicator</p> <p>Approaches to Learning Thinking, Communication, Self-management</p>	<p>Where we are in place and time An inquiry into orientation in place and time; personal histories; homes and journeys; the discoveries, explorations and migrations of humankind; the relationships between and the interconnectedness of individuals and civilizations, from local and global perspectives.</p> <p>Central idea The past can be questioned through artefacts.</p> <p>Key Concepts Connection, Perspective</p> <p>Related Concepts Perception, history, observation</p> <p>Lines of inquiry</p> <ul style="list-style-type: none"> What artefacts tell us about ourselves How artefacts contribute to our understanding of the past The value of preserving artefacts <p>Learner Profiles Inquirer, Open-minded, Knowledgeable</p> <p>Approaches to Learning Thinking, Research</p>	<p>Sharing the planet An inquiry into rights and responsibilities in the struggle to share finite resources with other people and with other living things; communities and the relationships within and between them; access to equal opportunities; peace and conflict resolution.</p> <p>Central idea Reducing waste helps our environment.</p>  <p>Key Concepts Responsibility, Causation, Function</p> <p>Related Concepts Pollution, resources, conservation</p> <p>Lines of inquiry</p> <ul style="list-style-type: none"> Reducing waste How waste has impacted the environment How the he earth's resources (renewable and non-renewable) are shared <p>Learner Profiles Principled, Caring, Balanced</p> <p>Approaches to Learning Self-management, Thinking (critical)</p>
---	--	--	---	--	---

Year 3

<p>Who we are An inquiry into the nature of the self; beliefs and values; personal, physical, mental, social and spiritual health; human relationships including families, friends, communities and cultures; rights and responsibilities; what it means to be human.</p> <p>Central idea Lifestyle balance promotes health and well-being.</p>  <p>Key Concepts Function, change, form</p> <p>Related Concepts Growth, well-being, emotions, resilience and choices</p> <p>Lines of inquiry</p> <ul style="list-style-type: none"> • Responding to failure • Hauora (personal well-being) • Decision making and management <p>Learner Profile Knowledgeable, Balanced, Caring</p> <p>Approaches to learning Self-management, social</p>	<p>How we organise ourselves An inquiry into the interconnectedness of human-made systems and communities; the structure and function of organizations; societal decision-making; economic activities and their impact on humankind and the environment.</p> <p>Central idea Humans develop ways to cope with disasters.</p> <p>Key Concepts Responsibility, causation</p> <p>Related Concepts Communication, consequences, role, citizenship</p> <p>Lines of inquiry</p> <ul style="list-style-type: none"> • Personal responsibility • Preparing for possible disasters • Impact of disasters on humans and environment <p>Learner Profile Knowledgeable, Thinker</p> <p>Approaches to learning Self-management, communication</p>	<p>How we express ourselves An inquiry into the ways in which we discover and express ideas, feelings, nature, culture, beliefs and values; the ways in which we reflect on, extend and enjoy our creativity; our appreciation of the aesthetic.</p> <p>Central idea Inspiration for creativity comes in a variety of forms.</p> <p>Key Concepts Form, perspective, connection,</p> <p>Related Concepts Interpretations, creativity, communication, performance, sound, vibration, culture</p> <p>Lines of inquiry</p> <ul style="list-style-type: none"> • Inspiration • Communicating emotions • Creative ways to express identity <p>Learner Profile Risk taker, Communicator</p> <p>Approaches to learning Thinking, communication, self-management</p>	<p>Where we are in place and time An inquiry into orientation in place and time; personal histories; homes and journeys; the discoveries, explorations and migrations of humankind; the relationships between and the interconnectedness of individuals and civilizations, from local and global perspectives.</p> <p>Central idea Children's lives have changed over time.</p> <p>Key Concepts Change, connection</p> <p>Related Concepts Timelines, historical sources</p> <p>Lines of inquiry</p> <ul style="list-style-type: none"> • Sequence of events over time • Personal and family histories • Children across the globe <p>Learner Profile Open-minded, Reflective</p> <p>Approaches to learning Social, communication</p>	<p>Sharing the planet An inquiry into rights and responsibilities in the struggle to share finite resources with other people and with other living things; communities and the relationships within and between them; access to equal opportunities; peace and conflict resolution</p>  <p>Central idea We have the responsibility of helping to create a more peaceful world.</p> <p>Key Concepts Responsibility, perspective, causation</p> <p>Related Concepts Decisions, choices, prioritising, balance, conflict resolution</p> <p>Lines of inquiry</p> <ul style="list-style-type: none"> • Conflict resolution • How different people with different perspectives share the planet • Working towards peace <p>Learner Profile Principled, risk taker, communicator</p> <p>Approaches to learning Research, thinking, social</p>	<p>How the world works An inquiry into the natural world and its laws; the interaction between the natural world (physical and biological) and human societies; how humans use their understanding of scientific principles; the impact of scientific and technological advances on society and on the environment.</p> <p>Central idea Water is essential to life on earth.</p>  <p>Key Concepts Function, causation, connection</p> <p>Related Concepts Weather, climate, water cycle, global patterns, sustainability</p> <p>Lines of inquiry</p> <ul style="list-style-type: none"> • The water cycle • Effects of weather patterns on life • The interconnectedness of weather and seasons <p>Learner Profile Inquirer, Thinker</p> <p>Approaches to learning Research, thinking</p>
---	--	---	---	--	--

Year 4

<p>Who we are An inquiry into the nature of the self; beliefs and values; personal, physical, mental, social and spiritual health; human relationships including families, friends, communities and cultures; rights and responsibilities; what it means to be human.</p> <p>Central idea People's choices are influenced by their beliefs and values and can impact others.</p> <p>Key Concepts Responsibility, perspective</p> <p>Related Concepts Beliefs, rights, roles</p> <p>Lines of inquiry</p> <ul style="list-style-type: none"> • How people's beliefs and values influence their choices • How people's choices impact others • Responsibilities people have while making choices <p>Learner Profile Principled and Inquirer</p> <p>Approaches to Learning Social and Communication</p>	<p>How the world works An inquiry into the natural world and its laws; the interaction between the natural world (physical and biological) and human societies; how humans use their understanding of scientific principles; the impact of scientific and technological advances on society and on the environment.</p> <p>Central idea Materials may be manipulated in different ways.</p> <p>Key Concepts Function, change, form</p> <p>Related Concepts States of matter, transformation</p> <p>Lines of inquiry</p> <ul style="list-style-type: none"> • Properties of materials • Physical and chemical changes • Observing the material world <p>Learner Profile Reflective and Knowledgeable</p> <p>Approaches to Learning Communication and Thinking</p>	<p>How we organise ourselves An inquiry into the interconnectedness of human-made systems and communities; the structure and function of organizations; societal decision-making; economic activities and their impact on humankind and the environment.</p> <p>Central idea The journey of food involves many processes and people.</p>  <p>Key Concepts Connection, causation</p> <p>Related Concepts Relationships, consequences</p> <p>Lines of inquiry</p> <ul style="list-style-type: none"> • Origins of food • Transportation journey • Roles people play in the journey of food <p>Learner Profile Caring and Balanced</p> <p>Approaches to Learning Research and Self-management</p>	<p>How we express ourselves An inquiry into the ways in which we discover and express ideas, feelings, nature, culture, beliefs and values; the ways in which we reflect on, extend and enjoy our creativity; our appreciation of the aesthetic.</p> <p>Central idea Artistic and cultural expression fosters personal and collaborative response.</p> <p>Key Concepts Function, causation, form</p> <p>Related Concepts Myths, legends, mechanics, creativity, culture</p> <p>Lines of inquiry</p> <ul style="list-style-type: none"> • Design thinking process • Storytelling • Appreciating creativity <p>Learner Profile Risk-taker, Reflective and Communicator</p> <p>Approaches to Learning Thinking and Communication</p>	<p>Where we are in place and time An inquiry into orientation in place and time; personal histories; homes and journeys; the discoveries, explorations and migrations of humankind; the relationships between and the interconnectedness of individuals and civilizations, from local and global perspectives.</p> <p>Central idea Human migration is a response to challenges and opportunities.</p> <p>Key Concepts Connection, causation</p> <p>Related Concepts Geography</p> <p>Lines of inquiry</p> <ul style="list-style-type: none"> • The reasons why people migrate • Migration throughout history • Effects of migration on communities, cultures and individuals <p>Learner Profile Open-minded and Inquirer</p> <p>Approaches to Learning Social and Self-management</p>	<p>Sharing the planet An inquiry into rights and responsibilities in the struggle to share finite resources with other people and with other living things; communities and the relationships within and between them; access to equal opportunities; peace and conflict resolution.</p> <p>Central idea Co-constructed with students</p> <p>Key Concepts TBC</p> <p>Related Concepts Rights, adaptation, Behaviour</p> <p>Lines of inquiry Co-constructed with students</p> <p>Learner Profile Co-constructed with students</p> <p>Approaches to Learning Co-constructed with students</p>
---	--	---	---	---	--

Year 5

Who we are

An inquiry into the nature of the self; beliefs and values; personal, physical, mental, social and spiritual health; human relationships including families, friends, communities and cultures; rights and responsibilities; what it means to be human.

Central idea

Humans experience change as they grow and develop.



Key Concepts

Change, connection, form, function

Related Concepts

Resilience, sexuality, similarities and differences

Lines of inquiry

- Human growth and development
- How we learn
- Emotional regulation

Approaches to Learning

Self-management, social

Learner Profile

Student selected

How the world works

An inquiry into the natural world and its laws; the interaction between the natural world (physical and biological) and human societies; how humans use their understanding of scientific principles; the impact of scientific and technological advances on society and on the environment.

Central idea

Natural processes change the earth's surface over time.

Key Concepts

Change, causation, form

Related Concepts

Erosion, geology, tectonic plate movement, impact

Lines of inquiry

- Factors that change the Earth's surface
- Structure of the Earth's surface
- Impact on society

Approaches to Learning

Research, thinking, communication

Learner Profile

Student selected

How we organise ourselves

An inquiry into the interconnectedness of human-made systems and communities; the structure and function of organizations; societal decision-making; economic activities and their impact on humankind and the environment.

Central idea

Our needs and wants impact economic activities.



Key Concepts

Perspective, responsibility, function

Related Concepts

Consumption, distribution, resources, interdependence

Lines of inquiry

- Ethics of economic activities
- Product and exchange of goods and services
- Comparing wants and needs

Approaches to Learning

Thinking, social

Learner Profile

Student selected

How we express ourselves

An inquiry into the ways in which we discover and express ideas, feelings, nature, culture, beliefs and values; the ways in which we reflect on, extend and enjoy our creativity; our appreciation of the aesthetic.

Central idea

People express culture and creativity.

Key Concepts

Perspective, form, connection

Related Concepts

Beliefs, relationships, similarities and differences, food

Lines of inquiry

- Expressions of culture and creativity
- Customs and traditions
- The aesthetics of food

Approaches to Learning

Communication, thinking, social

Learner Profile

Student selected

Where we are in place and time

An inquiry into orientation in place and time; personal histories; homes and journeys; the discoveries, explorations and migrations of humankind; the relationships between and the interconnectedness of individuals and civilizations, from local and global perspectives.

Central idea

Exploration can lead to discoveries.

Key Concepts

Perspective, causation, responsibility

Related Concepts

Exploration, discovery

Lines of inquiry

- Famous explorers and explorations
- The impact of exploration
- The responsibilities that come with exploration

Approaches to Learning

Research, thinking, self-management

Learner Profile

Student selected

Sharing the planet

An inquiry into rights and responsibilities in the struggle to share finite resources with other people and with other living things; communities and the relationships within and between them; access to equal opportunities; peace and conflict resolution

Central idea

Access to limited resources can lead to conflict or cooperation.



Key Concepts

Perspective, responsibility

Related Concepts

Conservation, consumption, distribution

Lines of inquiry

- The distribution of natural resources
- Challenges to have equitable access to natural resources
- Our responsibility as global citizens

Approaches to Learning

Self-management, research, communication

Learner Profile

Student selected

Year 6

Who we are

An inquiry into the nature of the self; beliefs and values; personal, physical, mental, social and spiritual health; human relationships including families, friends, communities and cultures; rights and responsibilities; what it means to be human.

Central idea

Systems in the body work together.



Key Concepts

Causation, function, change

Related Concepts

Transformation, fitness

Lines of inquiry

- Different systems in the body and their purposes
- Changes at puberty
- How to stay in good physical health

Approaches to learning

Communication and research

Learner Profile

Balanced, knowledgeable, principled

How the world works

An inquiry into the natural world and its laws; the interaction between the natural world (physical and biological) and human societies; how humans use their understanding of scientific principles; the impact of scientific and technological advances on society and on the environment.

Central idea

Technological advances are changing lives.



Key Concepts

Function, change, perspective

Related Concepts

Mechanisation, adjustment

Lines of inquiry

- Technological advances are made through failure
- How automation changes our society
- Positive and negative use of technology

Approaches to learning

Thinking, self- Management

Learner Profile

Inquiries, risk-takers

How we organise ourselves

An inquiry into the interconnectedness of human-made systems and communities; the structure and function of organizations; societal decision-making; economic activities and their impact on humankind and the environment.

Central idea

Media can influence thinking and decision-making.

Key Concepts

Perspective, causation

Related Concepts

Ethics, control

Lines of inquiry

- Different uses of media
- Persuasive strategies used by media
- Pros and cons of media

Approaches to learning

Social, communication

Learner Profile

Open-minded, reflective

How we express ourselves

An inquiry into the ways in which we discover and express ideas, feelings, nature, culture, beliefs and values; the ways in which we reflect on, extend and enjoy our creativity; our appreciation of the aesthetic.

Central idea

Culture can be expressed in different ways.

Key Concepts

Connection, form, responsibility

Related Concepts

Perception, creativity, interpretation, culture

Lines of inquiry

- The arts as an expression of culture
- The value of art in the world
- Interpreting artworks

Approaches to learning

Research, communication, self-management

Learner Profile

Open-minded, reflective

Where we are in place and time

An inquiry into orientation in place and time; personal histories; homes and journeys; the discoveries, explorations and migrations of humankind; the relationships between the interconnectedness of individuals and civilizations, from local and global perspectives.

Central idea

Historical events affect current lives.

Key Concepts

Perspective, causation, responsibility

Related Concepts

Mediation, compromise, negotiation

Lines of inquiry

- How historical events influence nations
- Different views of historical events
- Our responsibility to preserve history

Approaches to learning

Thinking and self management

Learner Profile

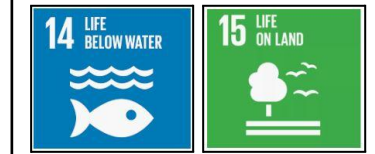
Principled, caring, thinker

Sharing the planet

An inquiry into rights and responsibilities in the struggle to share finite resources with other people and with other living things; communities and the relationships within and between them; access to equal opportunities; peace and conflict resolution

Central idea

Humans and animals impact ecosystems.



Key Concepts

Change, connection

Related Concepts

Adaptation, biodiversity, balance

Lines of inquiry

- Evolution and adaptation
- Our planet's unique biodiversity
- How humans affect the balance of biodiversity


Approaches to learning

Research and communication

Learner Profile

Communicator, balanced

Year 7

<p>Who we are An inquiry into the nature of the self; beliefs and values; personal, physical, mental, social and spiritual health; human relationships including families, friends, communities and cultures; rights and responsibilities; what it means to be human.</p> <p>Central idea Learning about each other and ourselves helps develop understanding.</p> <p>Key Concepts Perspective, change, responsibility</p> <p>Related Concepts Identify, community, needs</p> <p>Lines of inquiry</p> <ul style="list-style-type: none"> Personal journeys Relationships and interactions Social responsibility <p>Learner Profile Balanced, reflective, caring</p> <p>Approaches to Learning Social, communication</p>	<p>How the world works An inquiry into the natural world and its laws; the interaction between the natural world (physical and biological) and human societies; how humans use their understanding of scientific principles; the impact of scientific and technological advances on society and on the environment.</p> <p>Central idea Scientific and technological advancements support exploration.</p> <p>Key Concepts Function, causation, responsibility</p> <p>Related Concepts Invention, adaption, supply & demand,</p> <p>Lines of inquiry</p> <ul style="list-style-type: none"> The importance of advancement Morality of scientific and technological discoveries How understanding advances helps us to use them <p>Learner Profile Inquirer, thinker</p> <p>Approaches to Learning Research, thinking</p>	<p>How we organise ourselves An inquiry into the interconnectedness of human-made systems and communities; the structure and function of organizations; societal decision-making; economic activities and their impact on humankind and the environment.</p> <p>Central idea Choices of role models reflect characteristics that society and individuals value.</p> <p>Key Concepts Perspective, connection, responsibility</p> <p>Related Concepts Organisations, service, social responsibility, ethics, William Pike Challenge, action</p> <p>Lines of inquiry</p> <ul style="list-style-type: none"> Service Civic responsibility Reach of an individual's social impact <p>Learner Profile Reflective, principled, balanced</p> <p>Approaches to Learning Self-management, social, communication</p>	<p>How we express ourselves An inquiry into the ways in which we discover and express ideas, feelings, nature, culture, beliefs and values; the ways in which we reflect on, extend and enjoy our creativity; our appreciation of the aesthetic.</p> <p>Central idea Creativity and culture can be expressed in different ways.</p> <p>Key Concepts Form, change, function</p> <p>Related Concepts Innovation, Creation, Expression, culture</p> <p>Lines of inquiry</p> <ul style="list-style-type: none"> Ways stories are expressed Creative process The power of voice in the world <p>Learner Profile Communicators, risk-taker</p> <p>Approaches to Learning Thinking, self-management, communication</p>	<p>Where we are in place and time An inquiry into orientation in place and time; personal histories; homes and journeys; the discoveries, explorations and migrations of humankind; the relationships between and the interconnectedness of individuals and civilizations, from local and global perspectives.</p> <p>Central idea Human migration is a response to challenges, risks and opportunities.</p> <p>Key Concepts Change, causation</p> <p>Related Concepts Population, settlement, discovery, adaption and consequences</p> <p>Lines of inquiry</p> <ul style="list-style-type: none"> Causes for human migration Human movements throughout history Consequences of human migration <p>Learner Profile Open-minded, thinker</p> <p>Approaches to Learning Self-management, thinking, research</p>	<p>Sharing the planet An inquiry into rights and responsibilities in the struggle to share finite resources with other people and with other living things; communities and the relationships within and between them; access to equal opportunities; peace and conflict resolution.</p> <p>Central idea Distribution of wealth affects communities and individuals' access to equal opportunities.</p>  <p>Key Concepts Perspective, causation, connection</p> <p>Related Concepts Equity, equality, ownership,</p> <p>Lines of inquiry</p> <ul style="list-style-type: none"> Relationship between wealth and power The impact of distribution of wealth on communities and individuals Equitable access to resources and opportunities <p>Learner Profile Knowledgeable, inquirer, reflective</p> <p>Approaches to Learning Thinking, research, self-management</p>
---	--	---	---	--	---

Year 8

<p>Who we are An inquiry into the nature of the self; beliefs and values; personal, physical, mental, social and spiritual health; human relationships including families, friends, communities and cultures; rights and responsibilities; what it means to be human.</p> <p>Central idea Learning about each other and ourselves helps develop understanding.</p> <p>Key Concepts Function, causation, form, connection</p> <p>Related Concepts Relationships, gender, stereotypes, emotions, identity, needs, community</p> <p>Lines of Inquiry Personal journeys Relationships and interactions Social responsibility</p> <p>Learner Profile Communicator, Open-minded, Reflective, Caring</p> <p>Approaches to Learning Social, Communication</p>	<p>How the world works An inquiry into the natural world and its laws; the interaction between the natural world (physical and biological) and human societies; how humans use their understanding of scientific principles; the impact of scientific and technological advances on society and on the environment.</p> <p>Central idea The reproduction of living things contributes to the continuation of the species.</p> <p>Key Concepts Change, Causation, Connection</p> <p>Related Concepts Biology, genetics, reproductive Systems, patterns</p> <p>Lines of inquiry</p> <ul style="list-style-type: none"> • Reproduction and development • Identifying differences within and between species • Species survival <p>Learner Profile Inquirers, Knowledgeable, Balanced</p> <p>Approaches to Learning Social Skills, Communication, Research</p>	<p>How we organise ourselves An inquiry into the interconnectedness of human-made systems and communities; the structure and function of organizations; societal decision-making; economic activities and their impact on humankind and the environment.</p> <p>Central idea Governmental systems and decisions can promote or deny justice.</p> <div data-bbox="1086 592 1397 735" data-label="Image"> </div> <p>Key Concepts Responsibility, Function, Causation</p> <p>Related Concepts Governments, Justice, Conflict</p> <p>Lines of inquiry</p> <ul style="list-style-type: none"> • Global governmental systems • Governmental decisions and how they impact the citizens of a nation • The rights and responsibilities of all people worldwide <p>Learner Profile Knowledgeable, Balanced, Principled, Thinker</p> <p>Approaches to Learning Research, Thinking, Communication</p>	<p>How we express ourselves- EXHIBITION An inquiry into the ways in which we discover and express ideas, feelings, nature, culture, beliefs and values; the ways in which we reflect on, extend and enjoy our creativity; our appreciation of the aesthetic.</p> <p>Central idea Creativity and culture can be expressed in different ways.</p> <p>Key Concepts Perspective, change, form</p> <p>Related Concepts Beliefs, culture, creativity</p> <p>Lines of inquiry</p> <ul style="list-style-type: none"> • Ways stories are expressed • Creative process • The power of voice in the world <p>Learner Profile Communicator, Open Minded, Risk-Taker</p> <p>Approaches to Learning Thinking, self-management, communication, research, social</p>	<p>Where we are in place and time An inquiry into orientation in place and time; personal histories; homes and journeys; the discoveries, explorations and migrations of humankind; the relationships between and the interconnectedness of individuals and civilizations, from local and global perspectives.</p> <p>Central idea Civilisations connect through ideas and inventions.</p> <p>Key Concepts Form, Function, Causation</p> <p>Related Concepts Discovery, mechanics, physics, efficiency, technological advances, friction</p> <p>Lines of inquiry</p> <ul style="list-style-type: none"> • History of everyday inventions and innovations • Invention inspiration • Consequences of inventions and impact on society <p>Learner Profiles Open-minded, Thinkers, Risk-takers, Inquirers</p> <p>Approaches to Learning Thinking, Communication, Self-management</p>	<p>Sharing the planet An inquiry into rights and responsibilities in the struggle to share finite resources with other people and with other living things; communities and the relationships within and between them; access to equal opportunities; peace and conflict resolution</p> <p>Central idea Decisions and actions have consequences that affect society and the environment.</p> <p>Key Concepts Responsibility, causation</p> <p>Related Concepts Communication, Rights, Values, Justice</p> <p>Lines of inquiry</p> <ul style="list-style-type: none"> • Actions taken and decisions made within a community • <p>Learner Profile</p> <p>Approaches to Learning Social, Self-Management, Research</p>
---	--	--	---	--	--